











#25020-100



Throttle Rocker Universal



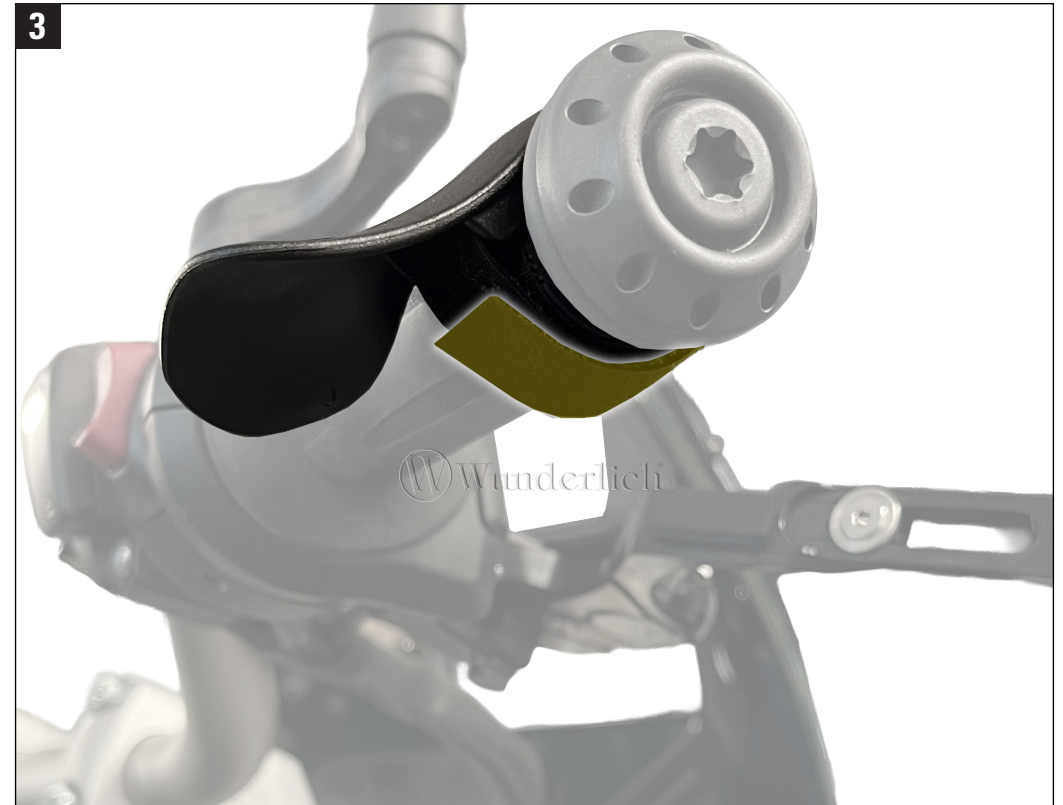
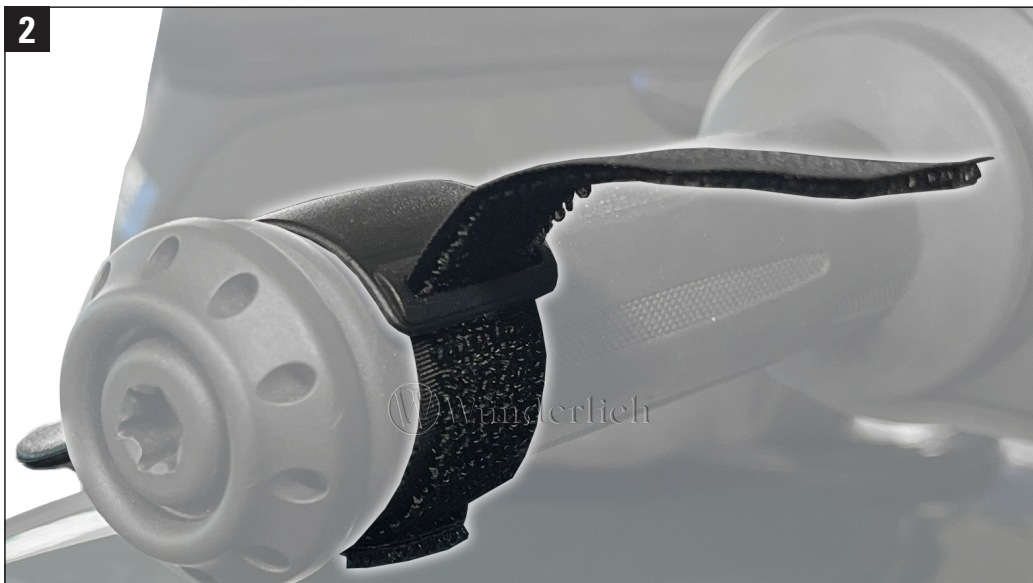
Legende

-  Anbau Tipp
-  Achtung
-  Vergrößerung
-  Reiniger
-  Schraube
-  Schraubensicherung
-  Drehmoment
-  Montagepaste

#	Bauteil	Menge
Die Farben der Abbildungen dienen nur der Veranschaulichung.		
1	Throttle Rocker	1
2	Gummiring	1



Bei glatten Griffen (Leder, Chrom) verwenden Sie bitte den beiliegenden Gummiring, welchen Sie an gewünschter Stelle aufschieben können.



4

Überstehendes Klettband wie in Bild 3 kürzen.