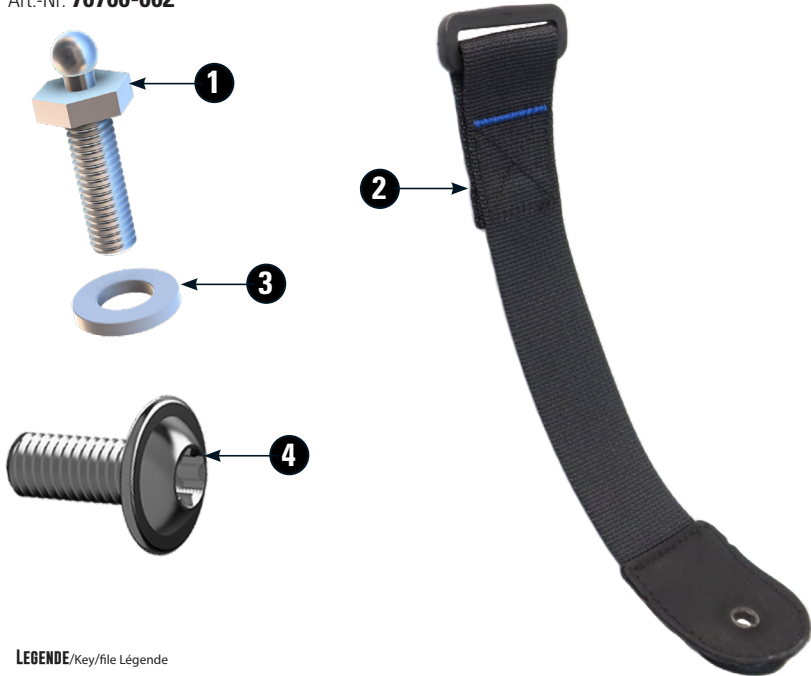








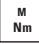

ANBAUSATZ TANKRUCKSACK

Tank bag attachment kit | Kit de fixation de la sacoche de réservoir | Kit de fijación de la bolsa sobredepósito | Kit di fissaggio alla borsa da serbatoio

Art.-Nr: 70700-002

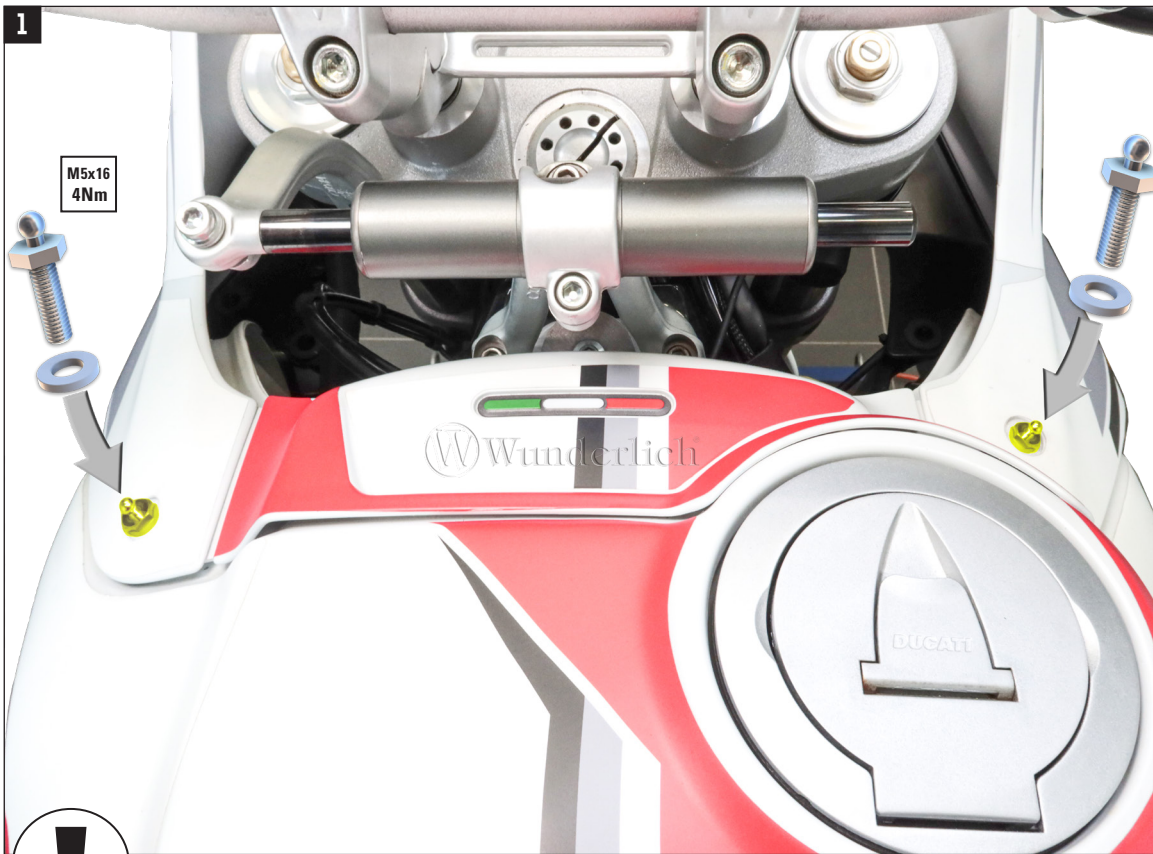


LEGENDE/Key/file Légende

-  **Anbau Tipp**
Fitting tip
Astuce de montage
-  **Achtung**
Attention
Attention
-  **Vergrößerung**
Magnification
Grossissement
-  **Montagepaste**
Fitting lubricant
Lubrifiant de montage
-  **Schraube**
Screw
Vis
-  **Schraubensicherung**
Thread locking fluid
Freiniflets
-  **Drehmoment**
Torque
Torque
-  **Reiniger**
Cleaner
Nettoyant

#	Bauteil component composant	DE Die Farben der Abbildungen dienen nur der Veranschaulichung. EN The colors are for illustrating purposes only. FR Les couleurs utilisées sont à titre indicatif seulement.	DIN	ISO	
1	LOXX Kugelschraube / LOXX screw 5 x 16				2
2	Spannband / Tension strap				1
3	U-Scheibe KST / Washer synthetic M5				2
4	Linsenflanschschraube / lens flange screw M6x25		7381SA2	7381	1
5	Lackschutzfolie / Protection film				20cm





Kontrollieren Sie vor jeder Tour den festen Sitz und das sichere einrasten des LOXX-Systems.

*Before each tour, check that the LOXX system is firmly seated and securely engaged.
Avant chaque visite, vérifiez que le système LOXX est bien en place et bien enclenché.*



Anliegende Flächen mit Lackschutzfolie bekleben.

*Cover adjacent surfaces with paint protection film.
Recouvrir les surfaces adjacentes d'un film de protection de la peinture.*



Wir empfehlen die Tankoberfläche regelmäßig zu reinigen und gegebenenfalls mit Lackschutzfolie zu schützen!

We recommend cleaning the tank surface regularly and protecting it with paint protection film if necessary!

Nous recommandons de nettoyer régulièrement la surface du réservoir et, le cas échéant, de la protéger avec un film protecteur pour peinture!